



# Using the School Emergency Operations Plan Framework to Support Bullying Prevention Efforts

September 7, 2016 | 2:00 PM ET



U.S. Department of Education  
Office of Safe and Healthy Students

[info@remstacenter.org](mailto:info@remstacenter.org) | <http://rem.ed.gov/>

# Housekeeping

- To download a copy of the presentation slides and other pertinent handouts, use the Downloads Box on your screen. Select the name of the handout(s) you want and click the “Download File(s)” button.
- There is no dial-in for this webinar. Audio is available via the link provided. If you are experiencing difficulty hearing the audio stream, make sure your computer speaker volume is turned up.
- If you experience technical difficulties during the webinar, please contact the REMS TA Center at [info@remstacenter.org](mailto:info@remstacenter.org) or 1-855-781-REMS [7367]. You may also request technical assistance using the Q&A Tool. These questions are viewable to the webinar moderator only.
- If you would like to pose questions to our presenters during the Webinar and are not able to do so via the Q&A chat feature on your screen, please email your questions to [info@remstacenter.org](mailto:info@remstacenter.org).

# Questions and Answers

Please pose any questions using the Q&A Tool on the lower right side of your computer screen.

# Welcome



## U.S. Department of Education | Office of Safe and Healthy Students

- **Madeline Sullivan, Program Analyst**
- **Rita Foy Moss, Program Analyst**

## Local Level Practitioner

- **Gina Kahn, Hampden-Wilbraham Regional School District**

## REMS TA Center

- **Akshay Jakatdar, Director of Technical Assistance**
- **Erika Hill, Research Assistant**



# Meeting Purpose

Bullying: An Introduction

Incorporating Bullying into the School Emergency Operations Plan (School EOP)

Measuring School Climate and Promoting Safe and Healthy Learning Environments as part of Step 2

Hearing Insight from a District Practitioner on Integrating Bullying Prevention Efforts within a School EOP

# Meeting Agenda

***1. Introduction to Bullying in Schools***

**2. Integrating Bullying Prevention within an EOP**

**3. Measuring School Climate**

**4. Hampden-Wilbraham Regional School District**

**5. Resources and Tools**

**6. Q&A Session**



# Madeline Sullivan

## U.S. Department of Education



U.S. Department of Education  
Office of Safe and Healthy Students

# What is Bullying?

*Bullying is unwanted, aggressive behavior among school aged children that involves a real or perceived power imbalance. The behavior is repeated, or has the potential to be repeated, over time. Bullying includes actions such as making threats, spreading rumors, attacking someone physically or verbally, and excluding someone from a group on purpose.*

-- **stopbullying.gov**



# What is Cyberbullying?

- *Cyberbullying is bullying that takes place using electronic technology. Electronic technology includes devices and equipment such as cell phones, computers, and tablets as well as communication tools including social media sites, text messages, chat, and websites.*
- *Examples of cyberbullying include mean text messages or emails, rumors sent by email or posted on social networking sites, and embarrassing pictures, videos, websites, or fake profiles.*

-- **stopbullying.gov**

## BULLYING

### WHAT YOU NEED TO KNOW

#### BULLYING IS A SERIOUS PROBLEM

that affects kids nationwide, and **ALL ADULTS HAVE A ROLE IN HELPING TO STOP IT.** Here are some of the most revealing statistics behind bullying – and how to detect it and take action.

**22%** OF STUDENTS AGES 12–18 WERE BULLIED AT SCHOOL DURING THE 2012- 2013 SCHOOL YEAR

*Data from the U.S. Department of Education (2015) unless otherwise noted.*

#### THE MANY FORMS OF BULLYING

14%

**MADE FUN OF,**  
called names, or insulted

13%

Subject of  
**RUMORS**

7%

Had been  
**CYBERBULLIED**



6%

**PUSHED**  
shoved, tripped, spit on



5%

**EXCLUDED**  
from activities

4%

**THREATENED**  
with harm

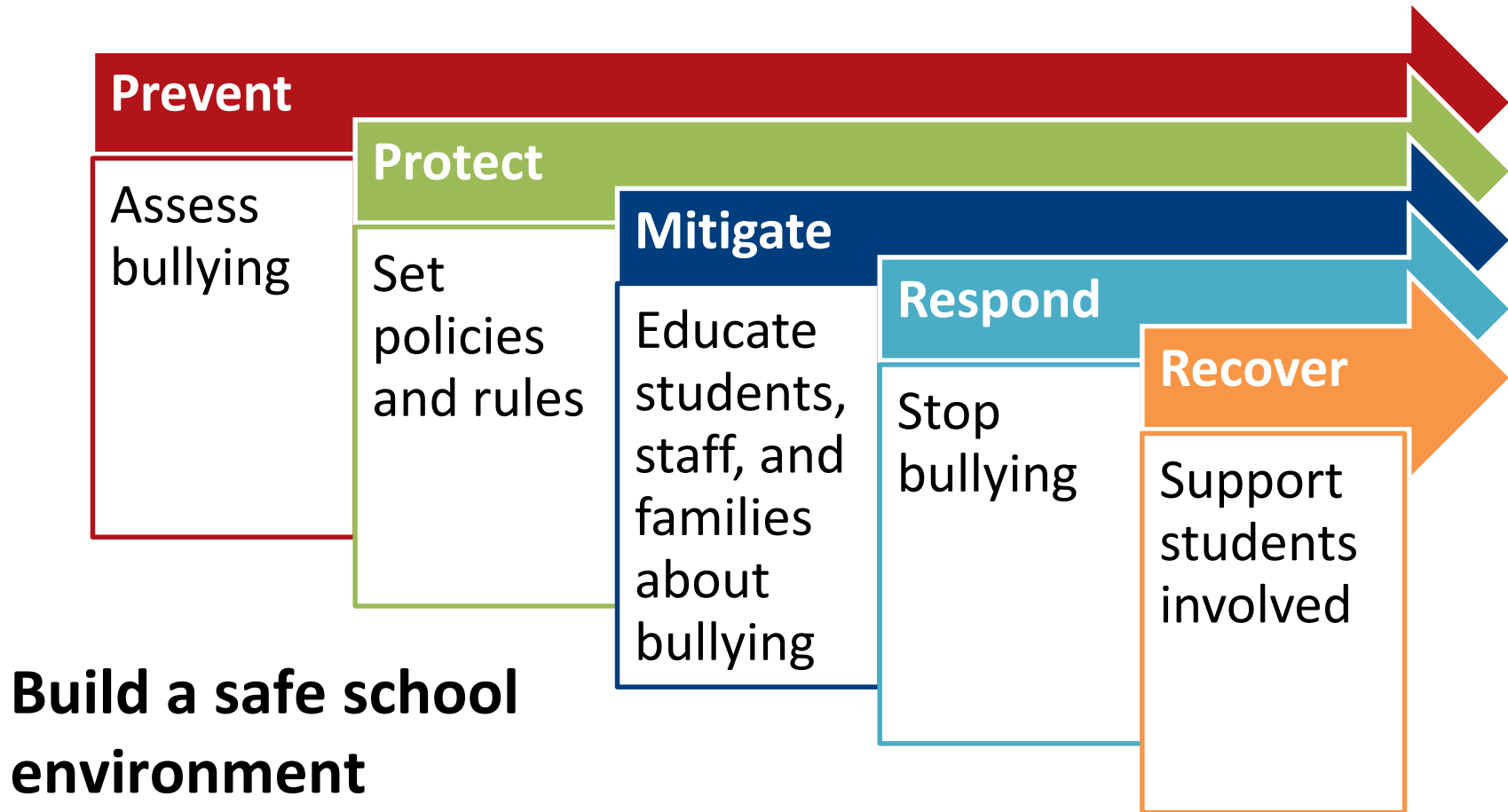
2%

**FORCED**  
to do things they  
didn't want to do

2%

Had property  
**DESTROYED**

# Bullying Initiatives in Schools



# Meeting Agenda

1. Introduction to Bullying in Schools

***2. Integrating Bullying Prevention within an EOP***

3. Measuring School Climate

4. Hampden-Wilbraham Regional School District


5. Resources and Tools

6. Q&A Session

# Why Integrate Bullying Within a School EOP?



All schools have an Emergency Operations Plan (EOP)



The goal of an EOP is to keep the whole school community safe before, during, and after



EOPs address more than hurricanes and earthquakes

# Common Threats and Hazards

Natural Hazards	Technological Hazards	Biological Hazards	Adversarial, Incidental, and Human-caused Threats
<ul style="list-style-type: none"> <li>➤ Earthquakes</li> <li>➤ Tornadoes</li> <li>➤ Lightning</li> <li>➤ Severe wind</li> <li>➤ Hurricanes</li> <li>➤ Floods</li> <li>➤ Wildfires</li> <li>➤ Extreme Temperatures</li> <li>➤ Landslides or mudslides</li> <li>➤ Tsunamis</li> <li>➤ Volcanic eruptions</li> <li>➤ Winter precipitation</li> </ul>	<ul style="list-style-type: none"> <li>➤ Explosions or accidental release of toxins from industrial plants</li> <li>➤ Accidental release of hazardous materials from within the school, such as gas leaks or laboratory spills</li> <li>➤ Hazardous materials releases from major highways or railroads</li> <li>➤ Radiological releases from nuclear power stations</li> <li>➤ Dam failure</li> <li>➤ Power failure</li> <li>➤ Water failure</li> </ul>	<ul style="list-style-type: none"> <li>➤ Infectious diseases, such as pandemic influenza, extensively drug-resistant tuberculosis, <i>Staphylococcus aureus</i>, and meningitis</li> <li>➤ Contaminated food outbreaks, including <i>Salmonella</i>, botulism, and <i>E. coli</i></li> <li>➤ Toxic materials present in school laboratories</li> </ul>	<ul style="list-style-type: none"> <li>➤ Fire</li> <li>➤ Active shooters</li> <li>➤ Criminal threats or actions</li> <li>➤ Gang violence</li> <li>➤ Bomb threats</li> <li>➤ Domestic violence and abuse</li> <li>➤ Cyber attacks</li> <li>➤ Suicide</li> </ul> <div data-bbox="1431 996 1756 1139" style="border: 1px solid black; padding: 5px; margin-top: 10px;"> <ul style="list-style-type: none"> <li>➤ <b>Bullying</b></li> </ul> </div>

# Planning and Programming



# Connection to the Six-Step Planning Process

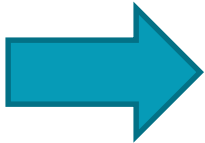




# Step 2: Understand the Situation

There are numerous types of assessments the planning team may use, including:

- **Site Assessment**
- **Behavioral Threat Assessment**
- **Capacity Assessment**
- ***Culture and Climate Assessment***



# Meeting Agenda

1. Introduction to Bullying in Schools

2. Integrating Bullying Prevention within an EOP

***3. Measuring School Climate***

4. Hampden-Wilbraham Regional School District

5. Resources and Tools

6. Q&A Session



# Rita Foy Moss

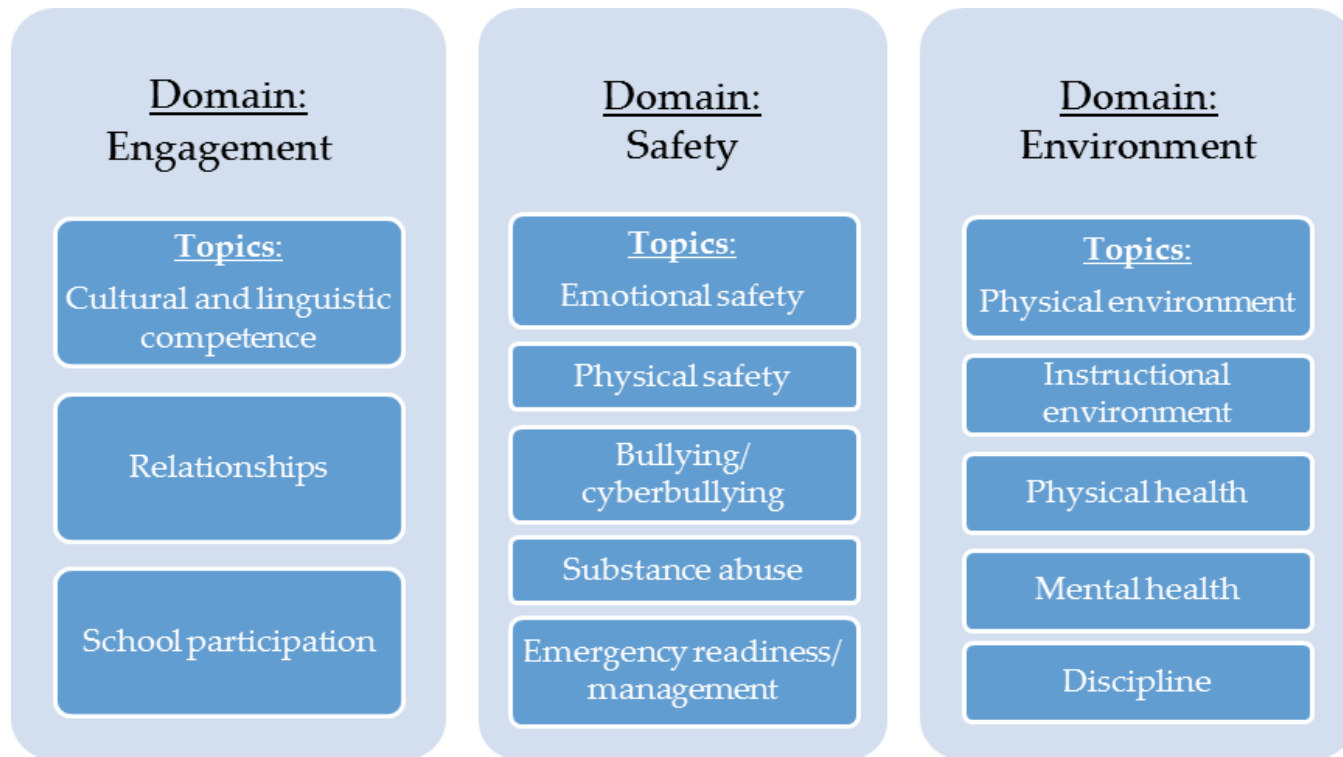
## U.S. Department of Education



U.S. Department of Education  
Office of Safe and Healthy Students

# ED School Climate Surveys (EDSCLS)

## Safe Supportive Schools/EDSCLS Model



# Scope of EDSCLS


NCES is prohibited by Federal law from asking questions about student high-risk behaviors.



To protect student privacy, EDSCLS does not ask about a respondent's victimization or perpetration.



Where possible, items that have performed well on earlier surveys have been used.



Questions aim at understanding the climate and culture experienced by students.

# School Climate Improvement Resource Package (SCIRP)

## Content of Resource Package

- 1 Quick Guide
- 2 Reference Manual
- 3 Action Guides for a Range of Stakeholders
- 4 Data Interpretation Guides
- 5 Online Modules
- 6 Customized List of Resource Package Items Based on an Assessment
- 7 Pointers for Improving School Climate Based on an Assessment

# Meeting Agenda

1. Introduction to Bullying in Schools

2. Integrating Bullying Prevention within an EOP

3. Measuring School Climate

***4. Hampden-Wilbraham Regional School District***

5. Resources and Tools

6. Q&A Session



# Gina S. Kahn, Ed.D.

## Hampden-Wilbraham Regional School District



U.S. Department of Education  
Office of Safe and Healthy Students



# Hampden-Wilbraham Regional School District



- **Western Massachusetts**
- **Rural/suburban  
(adjacent to Springfield)**
- **School population: 3138**
- **2 towns, 7 schools:**
  - 3 elementary**
  - 2 middle**
  - 1 high school**

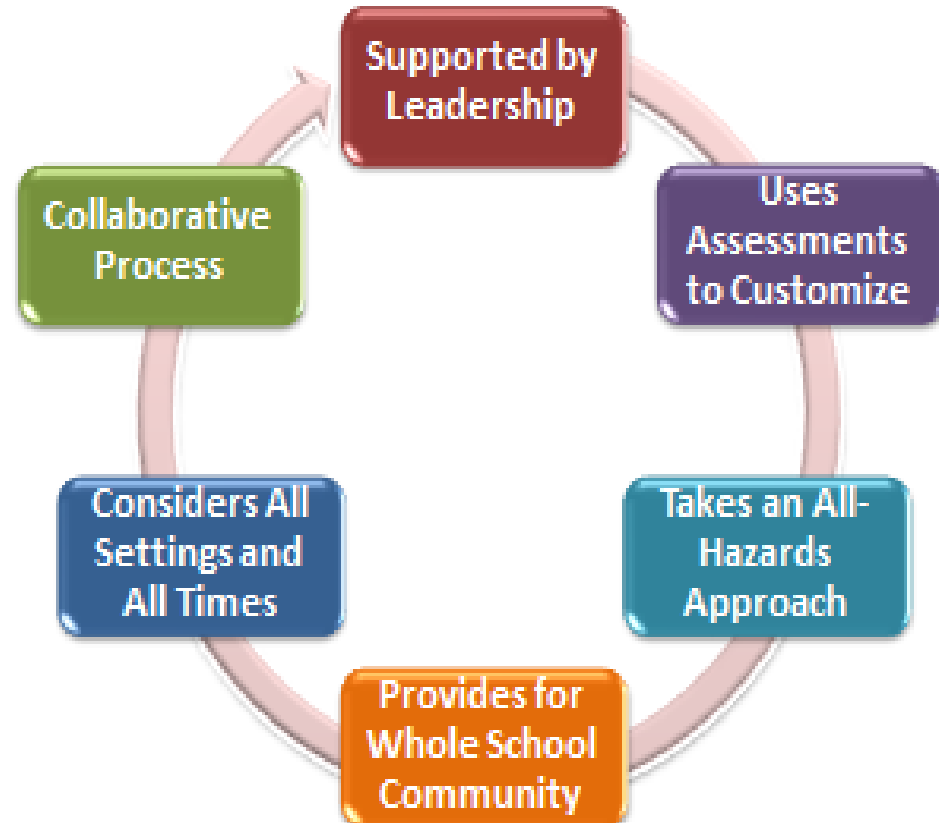
# Bullying Prevention and School Safety: Shared Commitments

To provide our students equal educational opportunities within a safe and respectful learning environment free from bullying and cyber-bullying. This commitment is essential to the District's vision of educational excellence, and is further strengthened by M.G.L. c. 71, § 37O, Act Relative to Bullying in Schools, prohibiting all forms of bullying and retaliation in all Massachusetts public and private schools.

(HWRSD Bullying Prevention Plan)

# Bullying Prevention and the Planning Principles

- Key Planning Principles that Support Bullying Prevention Efforts
- Goals and Challenges



# 1. Supported by Leadership

## State

- Massachusetts Anti-bullying legislation, 2010

## District

- Developing, reviewing and disseminating procedures
- Allocating resources (time) for professional development

## Building

- Committing to fidelity for evidence-based prevention/intervention practices
- Training staff, students, parents
- Reinforcing positive behavior/ enforcing policies

## 2. Uses Assessments to Customize

### Site Assessments

- Annual Safety/Vulnerability “Audits” conducted by multi-disciplinary safety teams

### School Climate Assessments

- Multiple sources of data
- Reviewed by “School Climate Teams” in each building

### Threat Assessment

- Procedures for identifying students who pose a risk and students at risk
- Development of safety plans

### Capacity Assessment

- Sufficient time and tools for training staff, students and community
- connections to other prevention efforts

# School Climate: Multiple Sources of Data

## Type/Source

Youth Risk Behavior Survey

Rediker Student Information

- Attendance

- Office Discipline

- Grades

Nurse Encounters

Counselor Intervention

S/TAT Involvement

Social Skills Checklists (SAEBRS)

# 3. Provides for the Whole School Community

## Tier 3 Targeted Support:

Students at high risk: Risk assessment, FBA and Safety Planning procedures; follow up.

## Tier 2 Selected Support:

Consistent enforcement of consequences; Direct instruction/support for students who bully, or who are bullied, or who may be at higher risk

## Tier 1 Universal Support:

School-wide Behavioral Expectations are clear, and bullying prevention skills are directly taught. *Responsive Classroom; Second Step; AVB*

# 4. Considers All Settings and Times

On school grounds or adjacent property



At school-related activities



In school owned/leased vehicles (bus!)



Through technology



# 5. A Collaborative Process: All Stakeholders

Building  
School  
Climate/  
Safety  
Teams

District  
Safety and  
Emergency  
Advisory  
Team

Local  
Police,  
EMT/Fire  
and  
District  
Attorney's  
Office

Parents

Students

Community  
partners  
i.e. YMCA  
Mental  
Health  
Early  
Childhood

# School Climate Indicators: Youth Risk Behavior Survey 2015-16

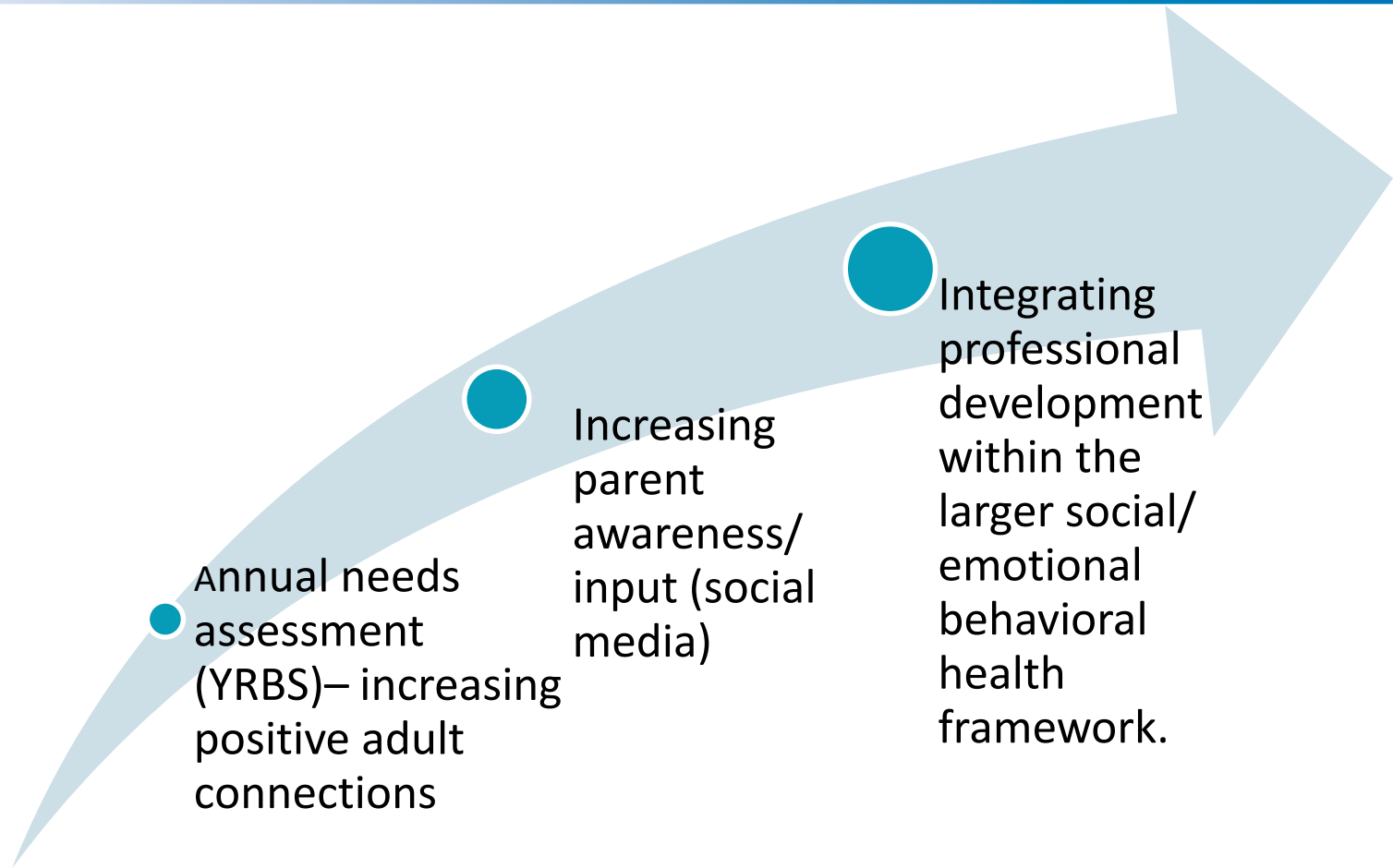
<b>Students who answered yes to the following:</b>	<b>2015</b>	<b>2016</b>
High School: Is there at least one teacher or other adult in this school that you can talk to if you have a problem?	81.7%	82.1%
Middle School: Is there at least one teacher or other adult in this school that you can talk to if you have a problem?	66.9%	63.5%
High School: I think bullying is a problem in my school.	19%	19%
Middle School: I think bullying is a problem in my school.	11%	12%

# Key Considerations

“School climate, including our bullying [prevention] programs are part of the annual safety audit. It is an excellent time to look at what we have in place and evaluate effectiveness.”

-Lori Mooney, Safety Team Chair  
Stony Hill Elementary School

# Challenges and Goals



# Meeting Agenda

1. Introduction to Bullying in Schools
2. Integrating Bullying Prevention within an EOP
3. Measuring School Climate
4. Hampden-Wilbraham Regional School District
- 5. *Resources and Tools***
6. Q&A Session

# National Center on Safe and Supportive Learning Environments (NCSSLE)



Training and TA

Events

Topics & Research

States and Grantees

Stay Connected

About



Help Reduce the Potential Risk for Zika Virus Transmission on School Premises and Among Students

## Upcoming Event

Engaging Educators in School-Justice Partnerships

September 27, 2016 - 12:00pm EDT

[Learn More](#)

DO YOU HAVE A QUESTION?

## TOPICS

### Education Levels

- Pre-K/Elementary School
- Middle/High School
- Higher Education



## Voices From The Field

In your opinion, what is the BEST way to reduce bullying? — August 2016

[Learn What Experts Think](#)

[Share Your Experiences](#)

# NCSSLE TA Center Resources

For More Information on the ED School Climate Surveys or School Climate Improvement Resource Package

NCSSLE TA Center | Operated by the American Institutes of Research | [ncssle@air.org](mailto:ncssle@air.org)

<https://safesupportivelearning.ed.gov/edscls>(About the Survey)

<https://safesupportivelearning.ed.gov/edscls/administration>(Button to Download)

<https://safesupportivelearning.ed.gov/scirp/about>(About resource Materials)

<https://safesupportivelearning.ed.gov/SCIRP/Quick-Guide>(Actual Button to Download)

# StopBullying.Gov

What You Can Do | Blog | Newsroom | Images | Videos | Resources | Policies & Laws | Español

**stopbullying.gov**

SEARCH

WHAT IS BULLYING | CYBER BULLYING | WHO IS AT RISK | PREVENT BULLYING | RESPOND TO BULLYING | GET HELP NOW

**FEATURES**

- New Online Course
- StopBullying.gov on Instagram
- Report Cyberbullying
- ▶ **Be More Than a Bystander**

**Get a new perspective on bullying.**

Take a walk in your kid's shoes and learn how they can safely stop bullying.

**WHAT YOU CAN DO**



# StopBullying.Gov Resources

[Bullying Prevention Continuing Education Course](#)

[Bullying Prevention Training Module Presentation](#)

[Organizing a Community Event: Community Action Toolkit](#)

[Working with Stakeholders: User Guides](#)

[State Anti-Bullying Laws & Policies](#)

# REMS TA Center

Share: [f](#) [t](#) [in](#) [g+](#) [✉](#) | [Contact Us](#) | [Follow Us](#) | [CoP Log in](#) | [Advanced Search](#)  [Search](#) ✕



[HOME](#)

[K-12 SCHOOLS & DISTRICTS](#)

[HIGHER EDUCATION](#)

[TECHNICAL ASSISTANCE](#)

[ABOUT US](#)

PREVENT PROTECT MITIGATE RESPOND   
RECOVER

## QUICK LINKS



[Request a Live Training](#)

[Take a Virtual Training](#)

## DEVELOP A HIGH-QUALITY EOP



An at-a-glance version of the Federal guides that help school, district, and higher ed emergency management

## NEWS & HIGHLIGHTS



Juvenile Justice Grant Opportunities Available

NATIONAL & SOCIAL INNOVATION  
COMMUNITY SERVICE FUND

Juvenile Justice Grant Opportunities Available

# REMS TA Center Resources



Phone: (855) 781-7367 (REMS)  
Email: [info@remstacenter.org](mailto:info@remstacenter.org)

[School Climate and  
Emergencies](#)

[Get the  
Guide](#)

[Join our  
Community  
of Practice!](#)

[Access  
Virtual  
Trainings](#)

[Request an  
On-site  
Training](#)

# Meeting Agenda

1. Introduction to Bullying in Schools
2. Integrating Bullying Prevention within an EOP
3. Measuring School Climate
4. Hampden-Wilbraham Regional School District
5. Resources and Tools
- 6. Q&A Session**

# Questions & Answer Session

Please pose any questions using the Q&A Tool on the lower right side of your computer screen.

Thank you for all you do each  
and every day to address  
bullying in your schools and  
school districts!!!